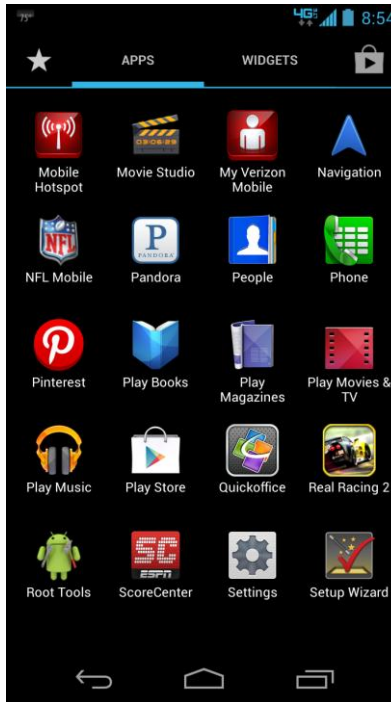
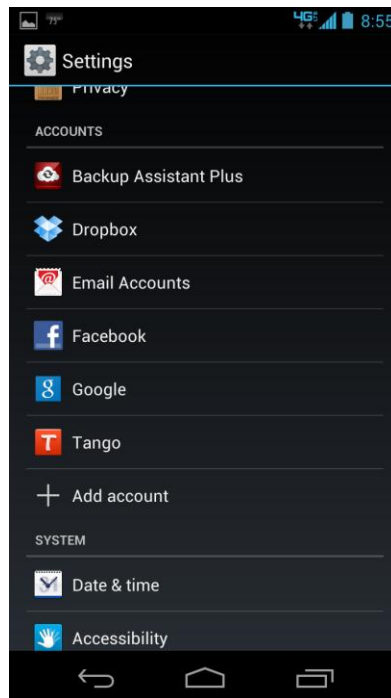


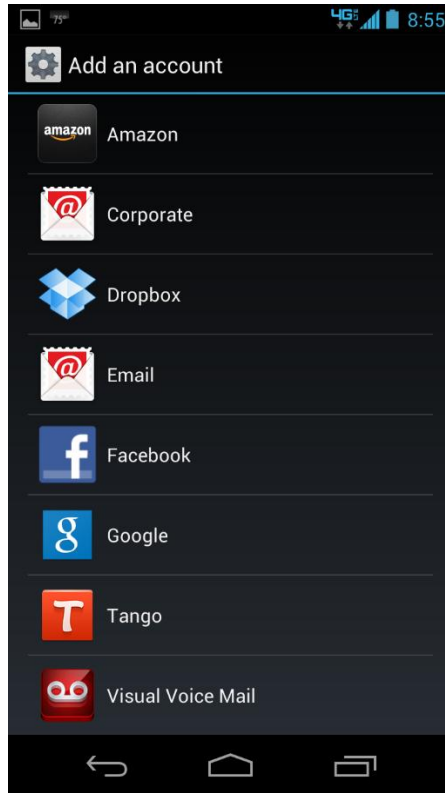
Setting up Student E-Mail on an Android Device



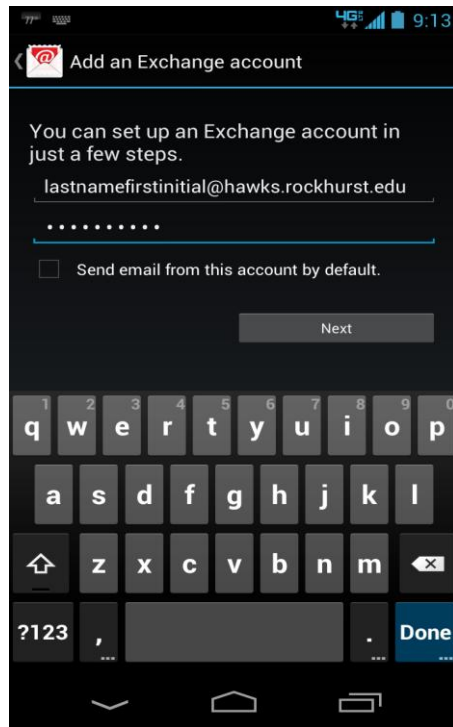
Click on the [settings](#) icon



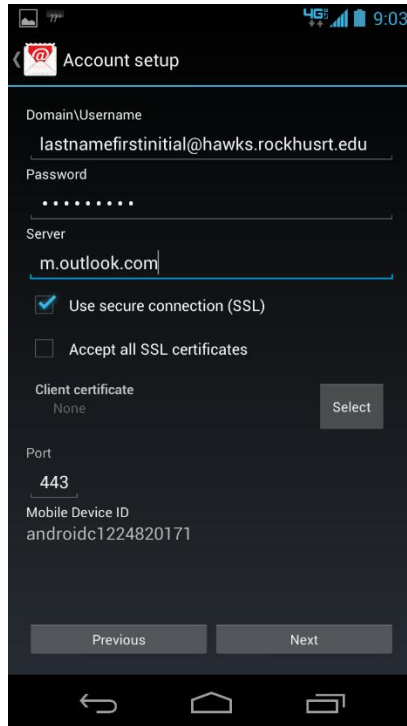
Click on [add account](#).



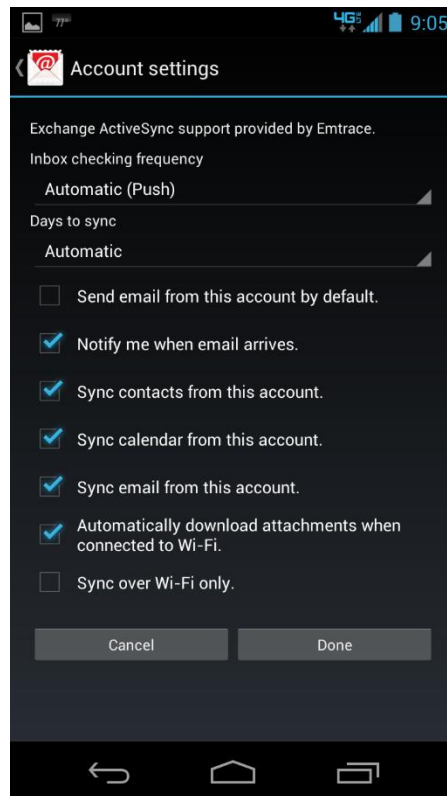
Click on [Corporate](#).



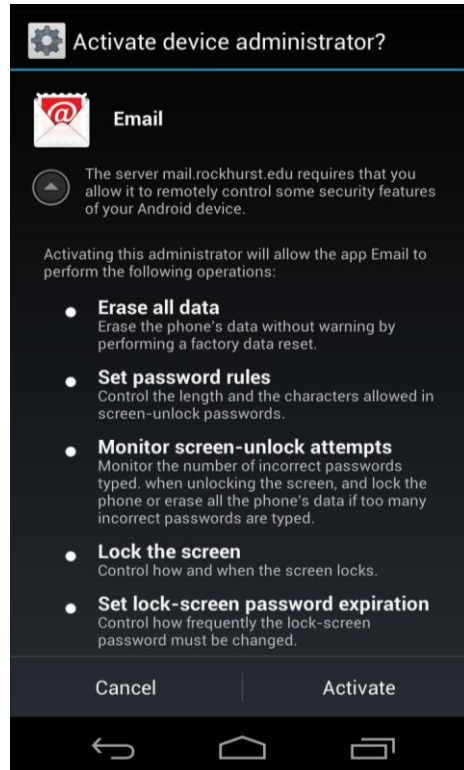
Put in your [RU Email Address](#) and [Password](#). Click [Next](#).



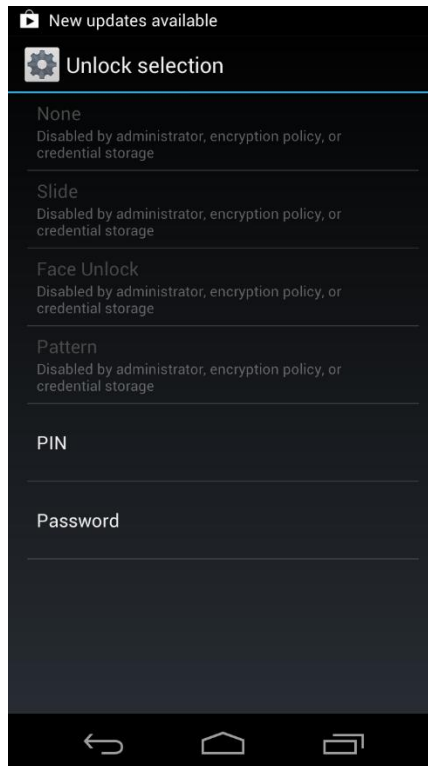
For the server put in m.outlook.com and select [use secure connection \(SSL\)](#). Click [Next](#).



Select the following. Click [Done](#).



Read the following. Select **Activate.**



If you do not have a PIN/Password for your phone. You will have set one up during this step.

