

Instructions for connecting to the VPN from your home computer.

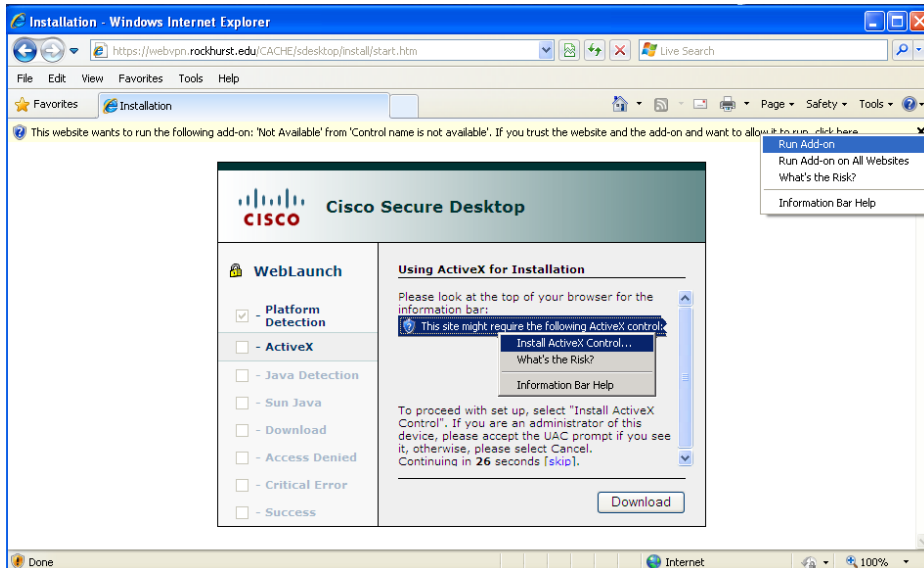
Type <http://webvpn.rockhurst.edu> in your browser.

Supported Internet Browsers are:

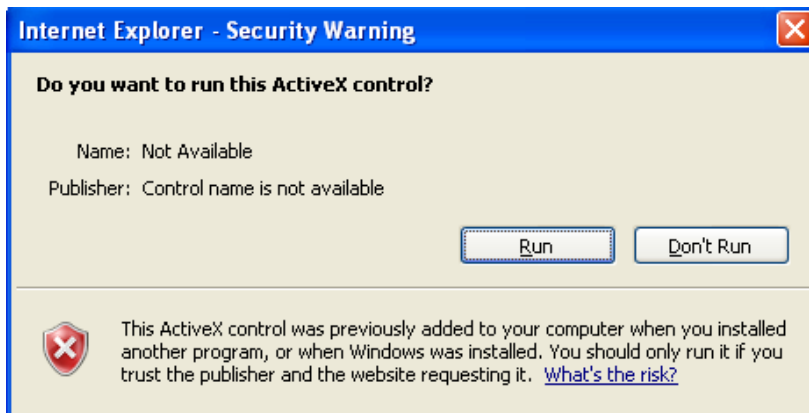
Internet Explorer 7 and 8, Google Chrome, FireFox and Safari.

The instructions below were done by using Internet Explorer 8.

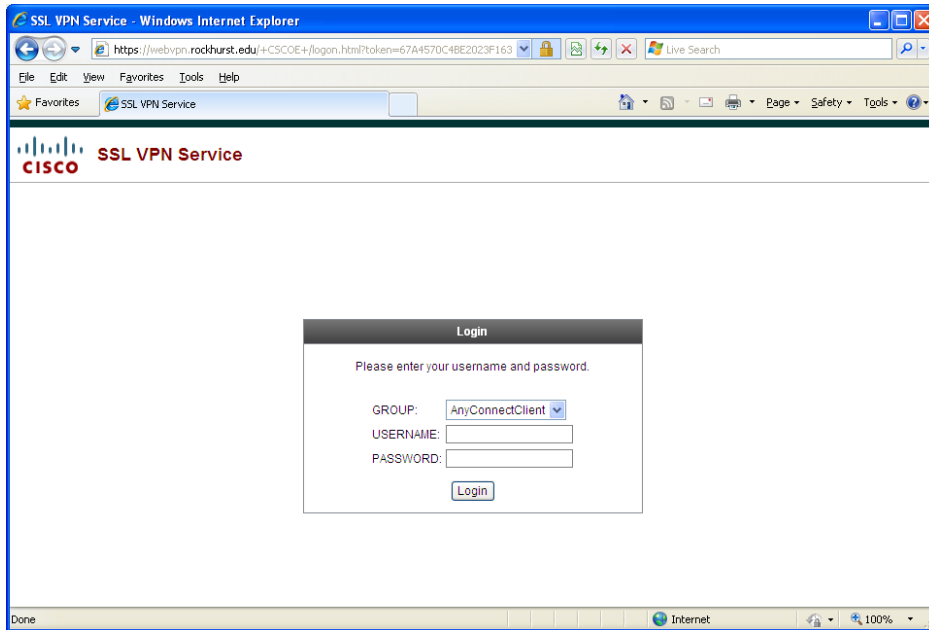
After clicking browsing to <https://webvpn.rockhurst.edu>, you will be presented with an add-on to install. Click on the yellow bar and choose "Run Add-on".



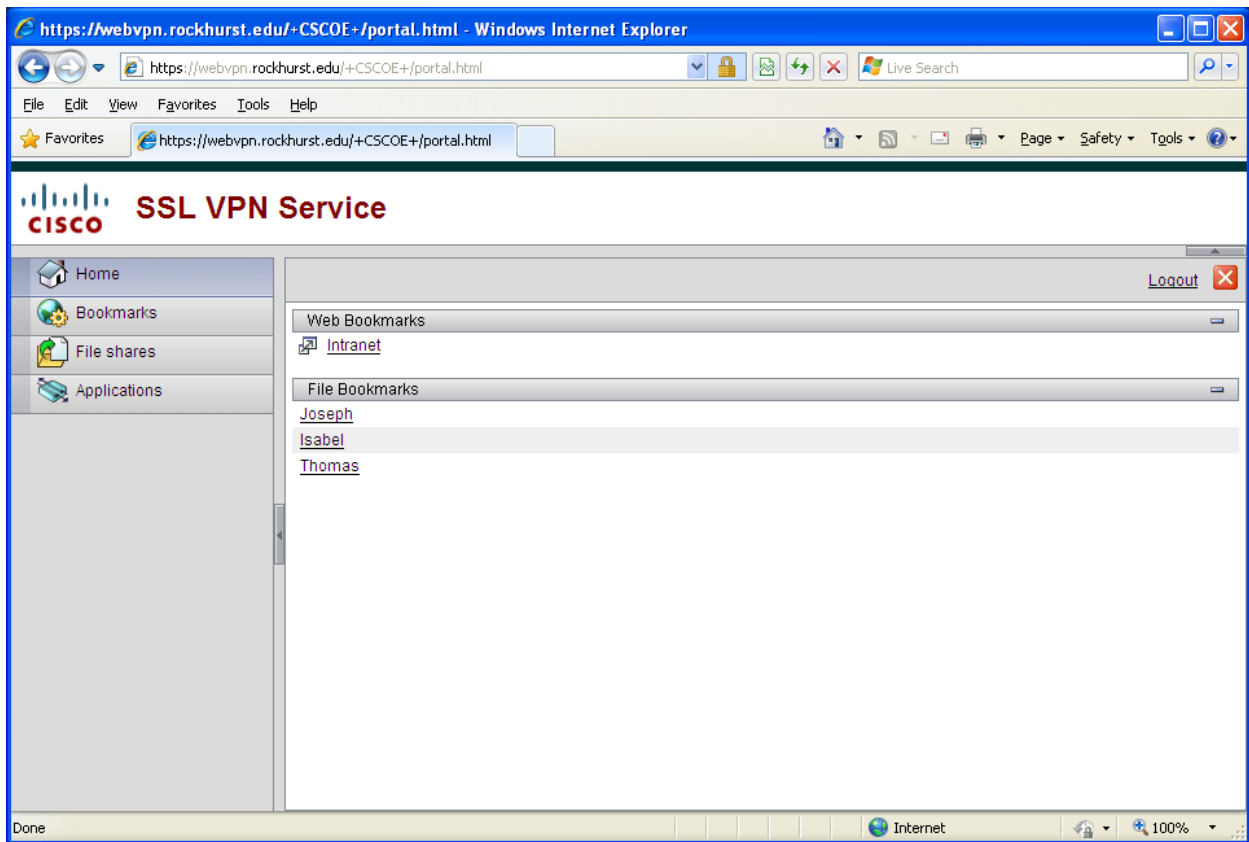
Internet Explorer will ask you whether you would like to run the ActiveX control. Please choose "Run".



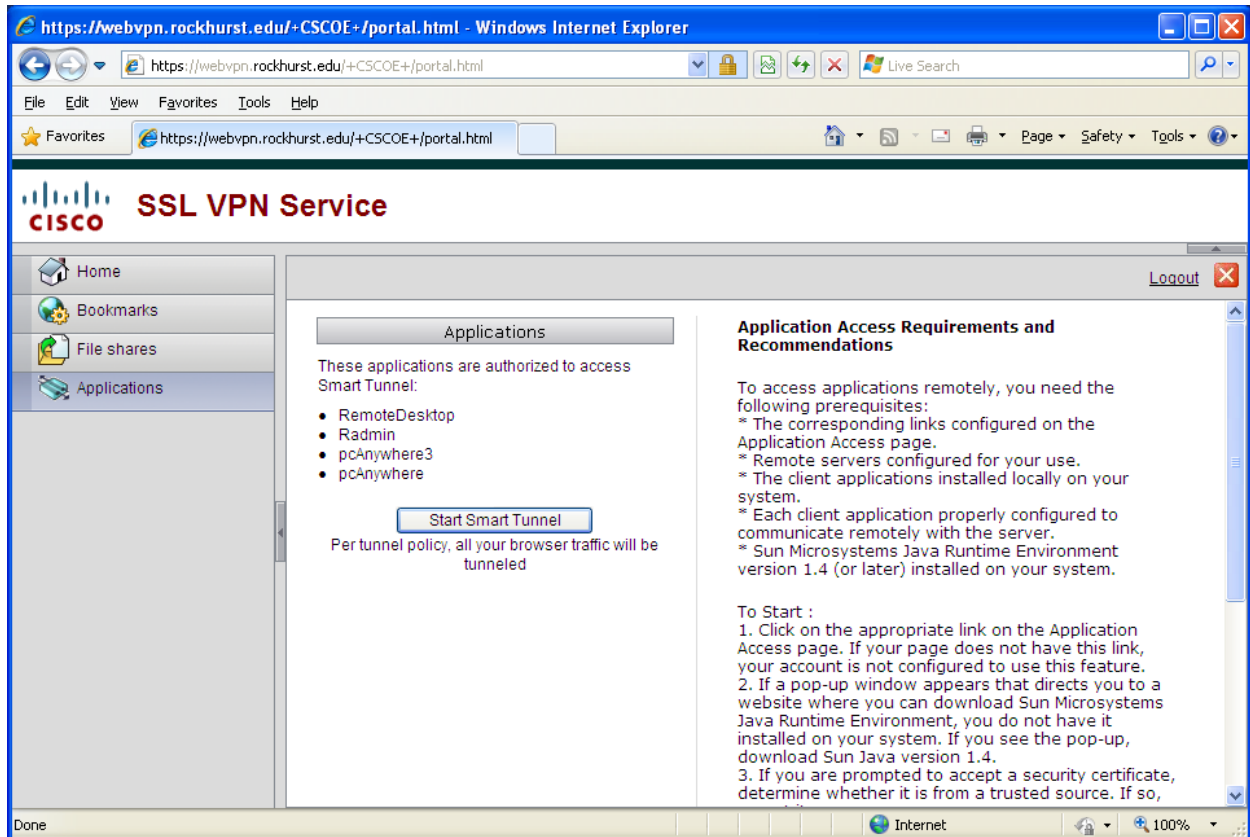
Next enter your Rockhurst network username and password.



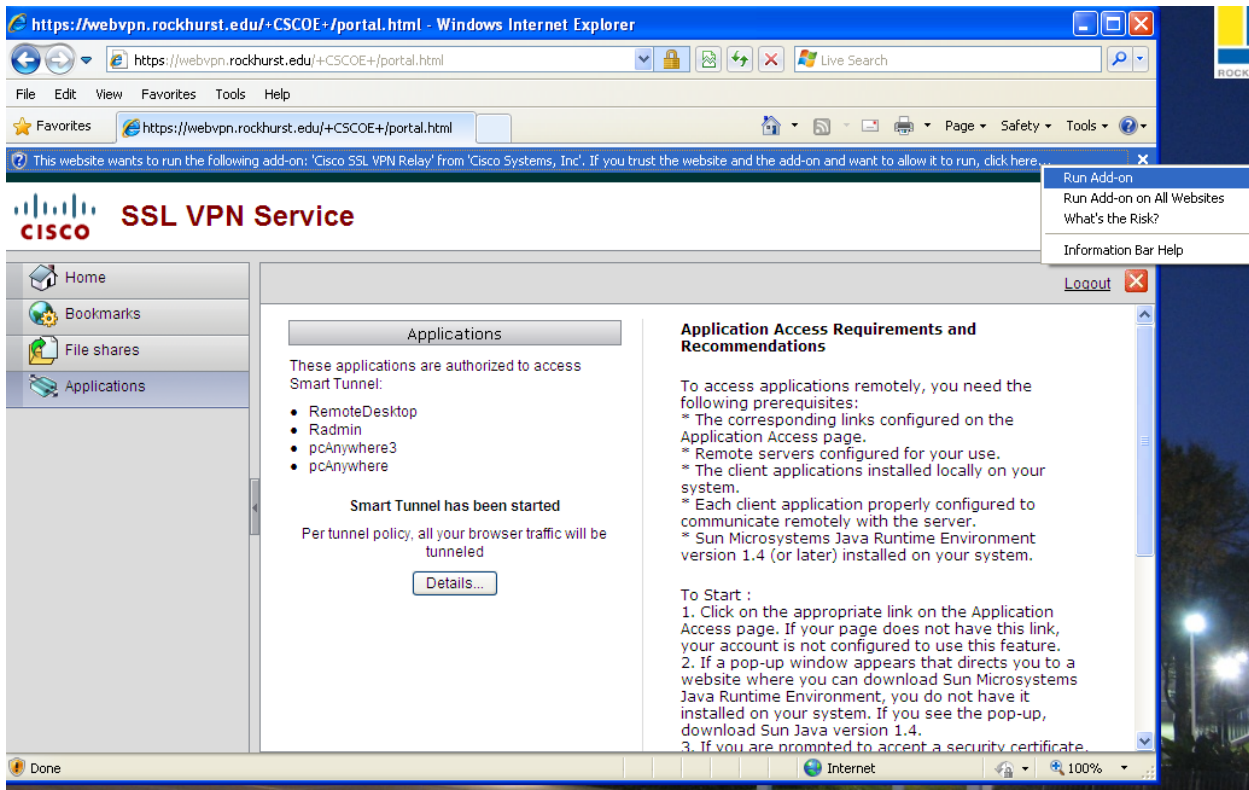
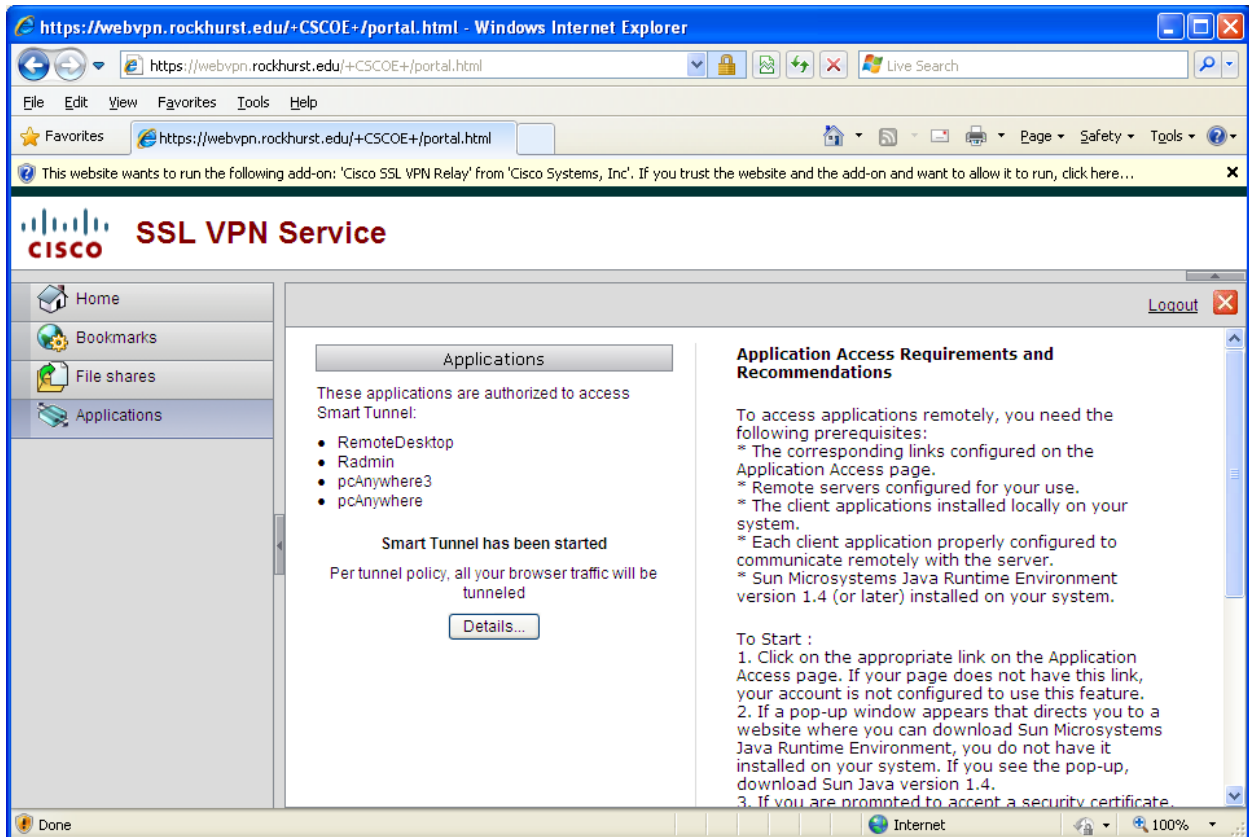
After logging in you will be at the VPN homepage. Here you can access the Intranet, File Shares and remotely connect to your office PC.



To connect to your office PC click "Applications" from the Left panel then Choose "Start Smart Tunnel".



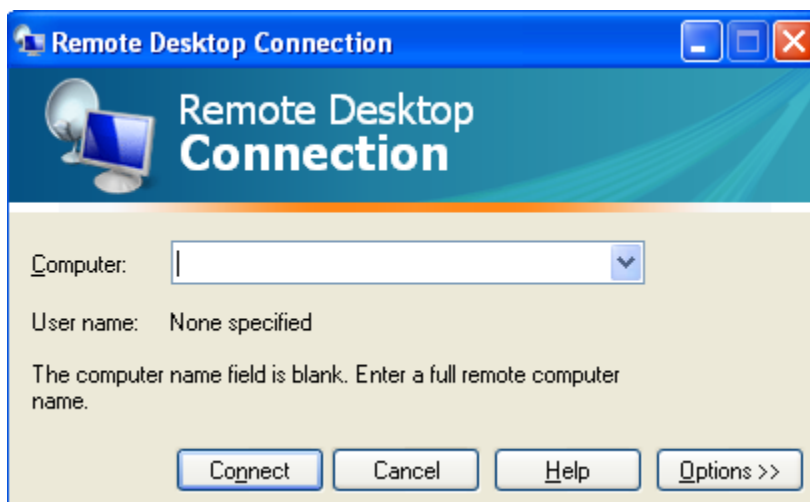
You will be presented with an add-on to install. Click on the yellow bar and choose "Run Add-on".



Internet Explorer will ask you whether you would like to run the ActiveX control. Please choose "Run".



Open Remote Desktop Connection. In Windows XP, Remote Desktop is located in Start -> Programs -> Accessories. Please type the computer name you would like to connect to and click Connect.



To disconnect please choose Logout from the right side of the browser window.

https://webvpn.rockhurst.edu/+CSCOE+/portal.html - Windows Internet Explorer

https://webvpn.rockhurst.edu/+CSCOE+/portal.html

File Edit View Favorites Tools Help

https://webvpn.rockhurst.edu/+CSCOE+/portal.html

CISCO SSL VPN Service

Home Bookmarks File shares Applications Logout

Applications

These applications are authorized to access Smart Tunnel:

- RemoteDesktop
- Radmin
- pcAnywhere3
- pcAnywhere

Start Smart Tunnel

Per tunnel policy, all your browser traffic will be tunneled

Application Access Requirements and Recommendations

To access applications remotely, you need the following prerequisites:

- * The corresponding links configured on the Application Access page.
- * Remote servers configured for your use.
- * The client applications installed locally on your system.
- * Each client application properly configured to communicate remotely with the server.
- * Sun Microsystems Java Runtime Environment version 1.4 (or later) installed on your system.

To Start :

1. Click on the appropriate link on the Application Access page. If your page does not have this link, your account is not configured to use this feature.
2. If a pop-up window appears that directs you to a website where you can download Sun Microsystems Java Runtime Environment, you do not have it installed on your system. If you see the pop-up, download Sun Java version 1.4.
3. If you are prompted to accept a security certificate, determine whether it is from a trusted source. If so,

Done Internet 100%